

STATE OF FLORIDA
COUNTY OF PALM BEACH
THIS PLAT WAS FILED FOR
RECORD AT
THIS DAY OF
APRIL, 1979 AND DULY RECORDED
IN PLAT BOOK NO. 37 ON PAGES
AND
JOHN B. DUNKLE, CLERK
CIRCUIT COURT
BY: DC

A PART OF A P.U.D.

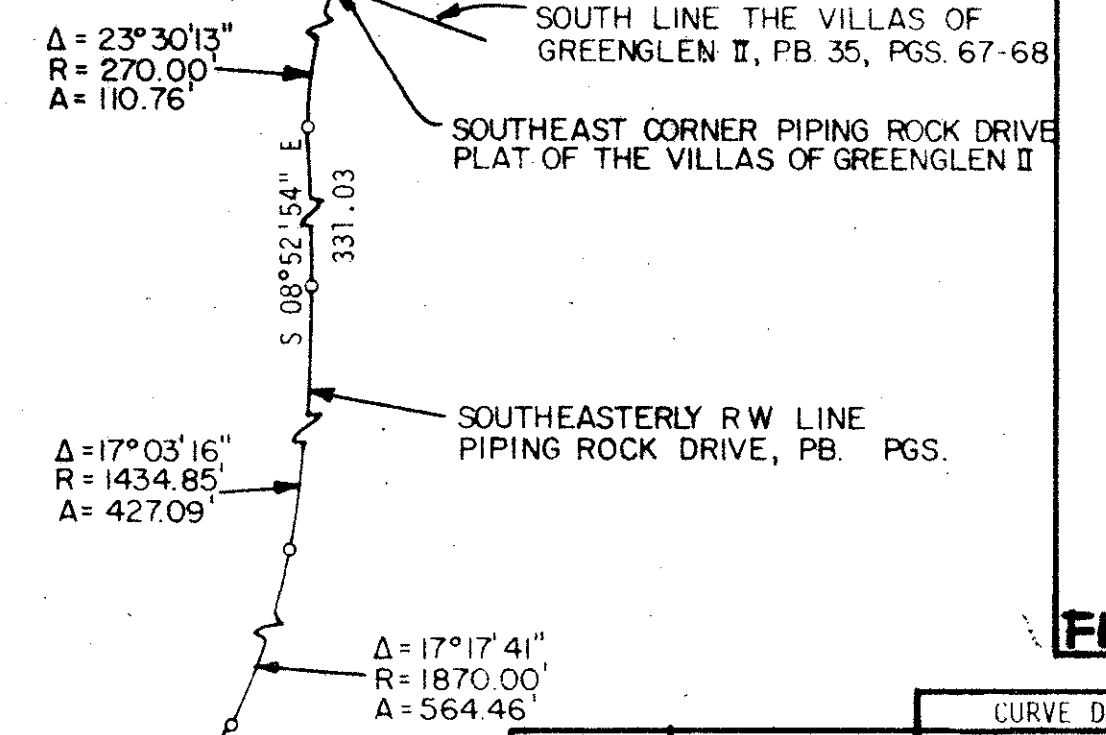
REPLAT FOREST GROVE PATIO HOMES

BEING A REPLAT OF FOREST GROVE PATIO HOMES, PLAT BOOK 36, PAGES 191 AND 192
PUBLIC RECORDS OF PALM BEACH COUNTY, FLA. LYING IN THE S.W. 1/4 OF
SECTION 35, TWP. 45 SO, RGE. 42 E., PALM BEACH COUNTY, FLA.

APRIL 1979 *Tract I*



POINT OF COMMENCEMENT

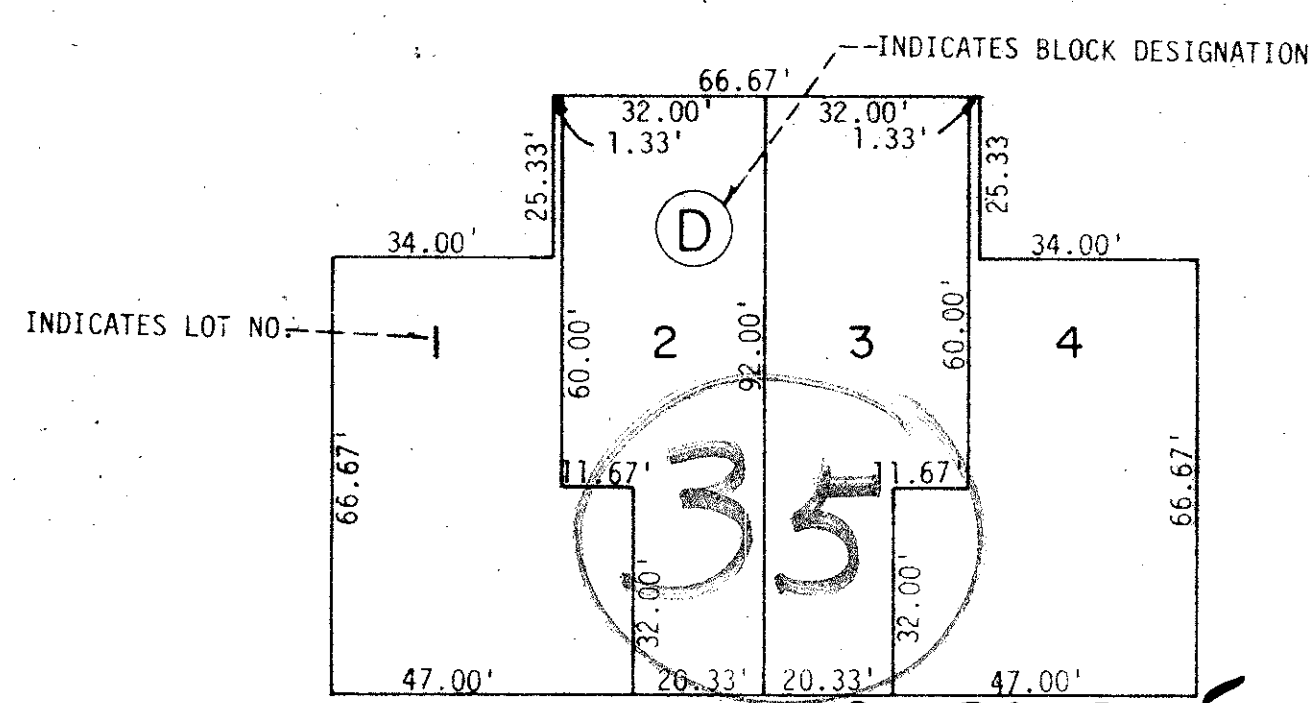
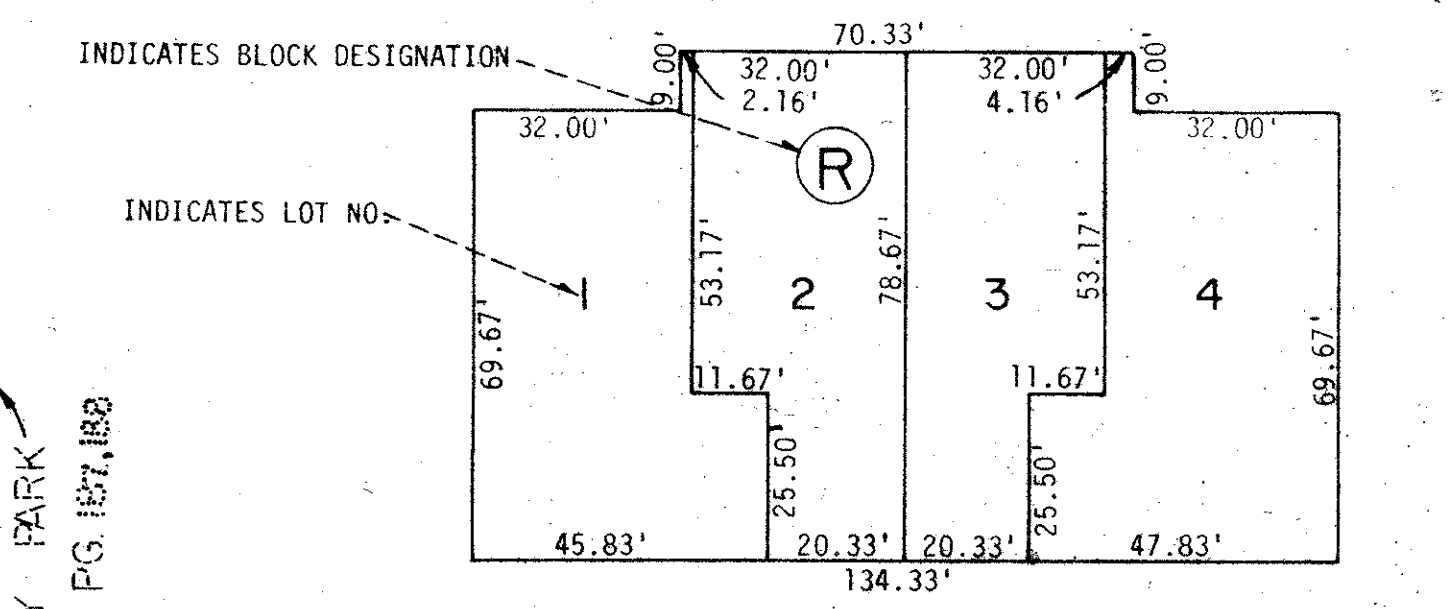
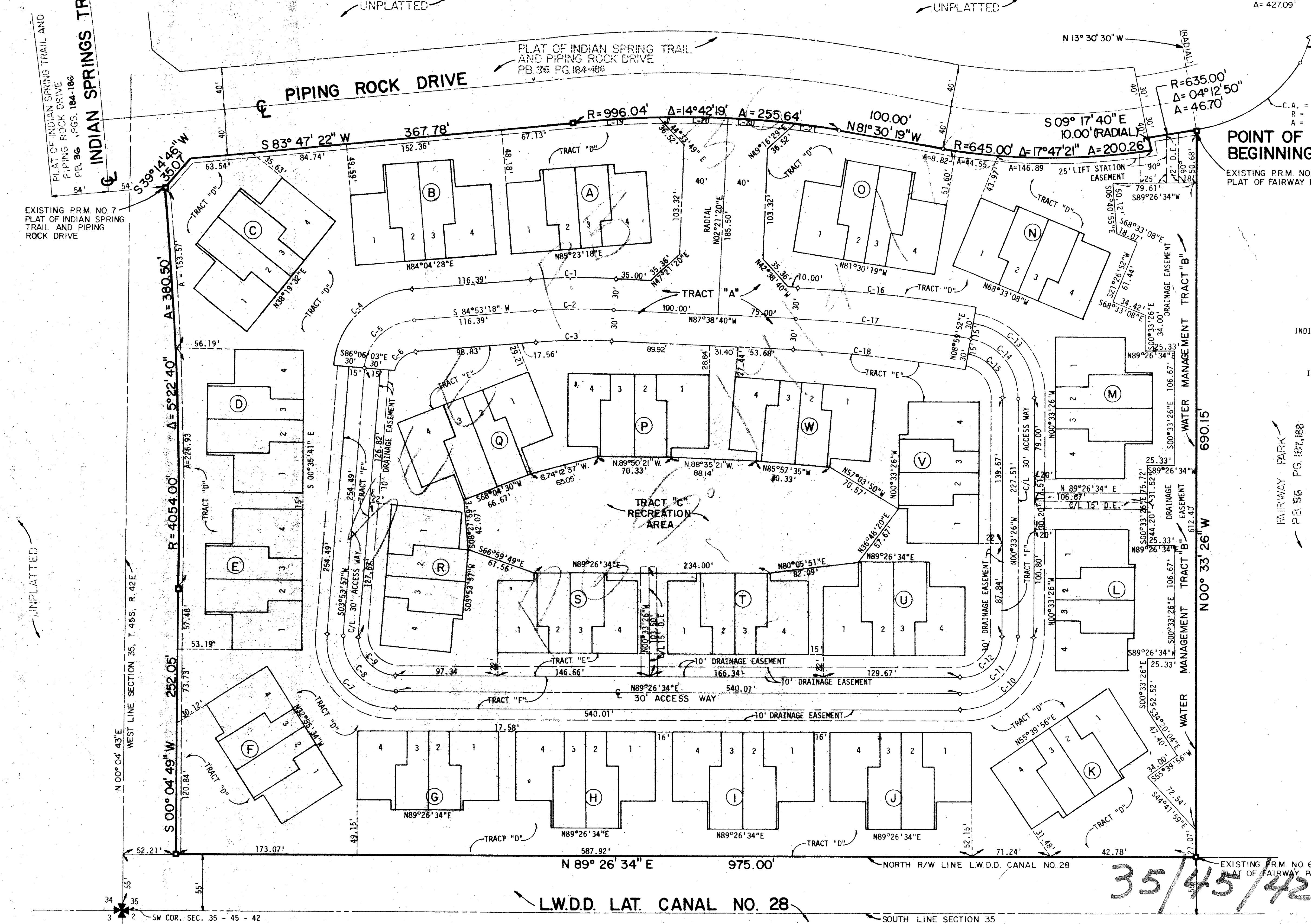


C. NO.	CENT. ANG.	CURVE DATA			
		RADIUS	ARC	CHORD	TANGENT
C-1	07°28'02"	610.00'	79.50'	79.44'	39.81'
C-2	07°28'02"	580.00'	75.59'	75.54'	37.85'
C-3	07°28'02"	550.00'	71.68'	71.63'	35.89'
C-4	80°59'21"	80.00'	113.08'	103.90'	68.31'
C-5	80°59'21"	50.00'	70.68'	64.94'	42.70'
C-6	80°59'21"	20.00'	28.27'	25.98'	17.08'
C-7	94°27'23"	65.00'	107.16'	95.43'	70.26'
C-8	94°27'23"	50.00'	82.43'	73.41'	54.05'
C-9	94°27'23"	35.00'	57.70'	51.38'	37.83'
C-10	90°00'00"	70.00'	109.96'	98.99'	70.00'
C-11	90°00'00"	55.00'	86.39'	77.78'	55.00'
C-12	90°00'00"	40.00'	62.83'	56.57'	40.00'
C-13	80°26'42"	70.00'	98.28'	90.41'	59.20'
C-14	80°26'42"	55.00'	77.22'	71.03'	46.52'
C-15	80°26'42"	40.00'	56.16'	51.66'	33.83'
C-16	06°38'32"	1480.00'	171.57'	171.48'	85.88'
C-17	06°38'32"	1450.00'	168.10'	166.00'	84.14'
C-18	06°38'32"	1420.00'	164.62'	164.53'	82.40'
C-19	04°43'41"	996.04'	82.19'	82.17'	41.12'
C-20	03°50'17"	996.04'	66.72'	66.71'	33.37'
C-21	02°18'04"	996.04'	40.00'	40.00'	20.00'

INDIAN SPRINGS TRAIL
PLAT OF INDIAN SPRING TRAIL AND PIPING ROCK DRIVE
PB. 36 PGS. 184-186

EXISTING PRM NO 7
PLAT OF INDIAN SPRING TRAIL AND PIPING ROCK DRIVE

POINT OF BEGINNING
EXISTING PRM. NO 7
PLAT OF FAIRWAY PARK



1100000860259-305

37/88

BENCH MARK
land surveying and mapping, inc.

REPLAT FOREST GROVE PATIO HOMES
INDIAN SPRING PROJECT

DATE	SCALE	PROJECT	1600
4-6-79	1"=50'		2 2

Replat Forest Grove Patio Homes - PUD

35/45/42